

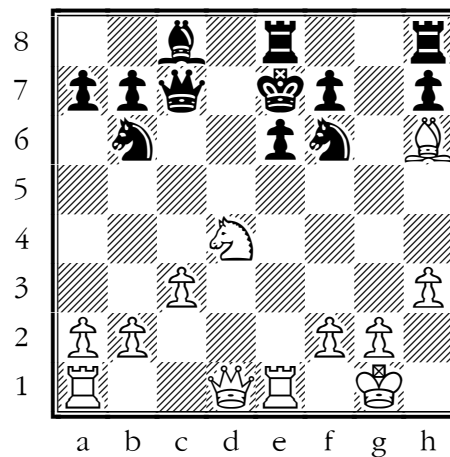
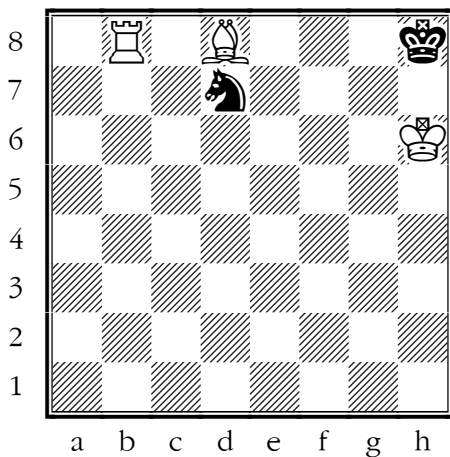
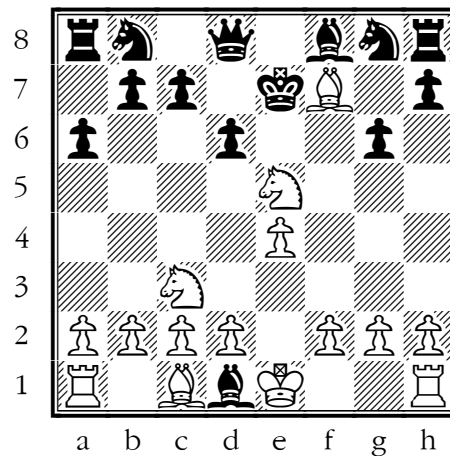
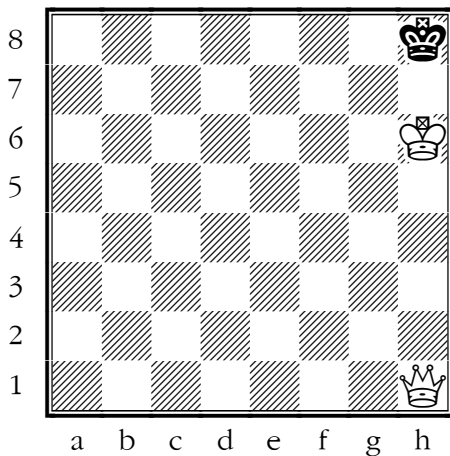
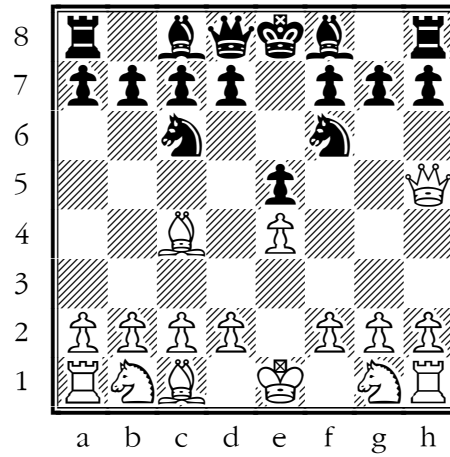
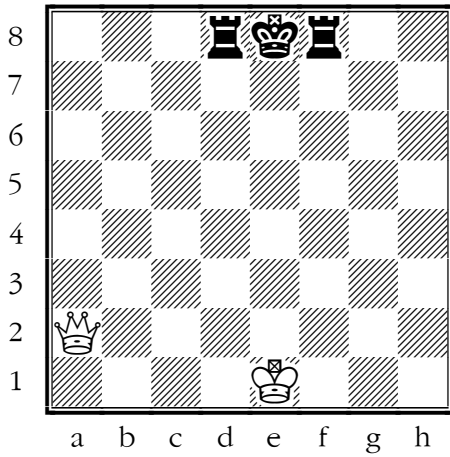
First Name:

Last Name:

Date:

Checkmate in 1 - Part 1

Draw an arrow to show how white can checkmate black in one move.



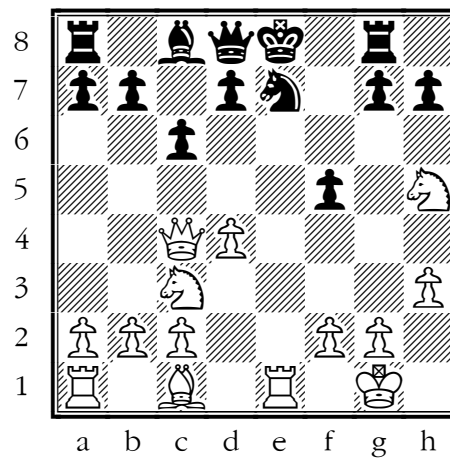
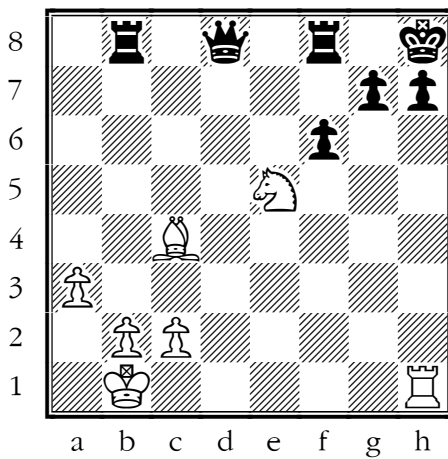
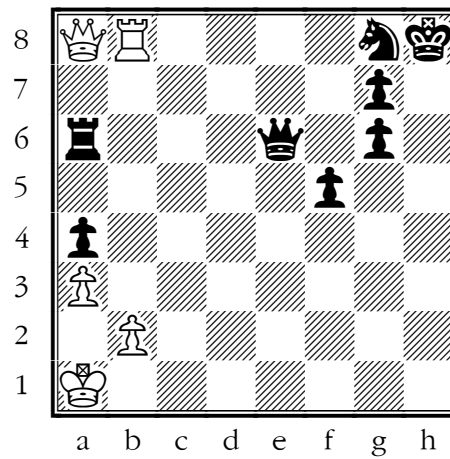
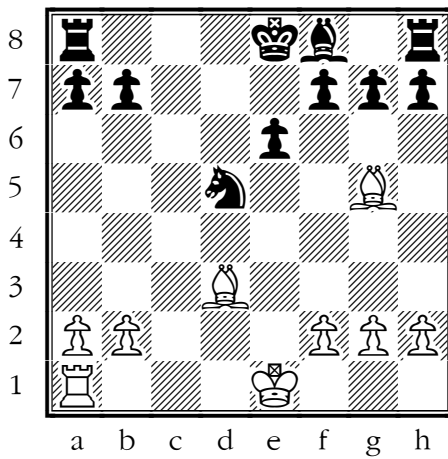
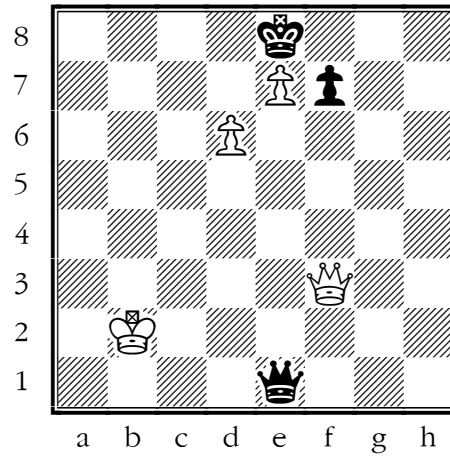
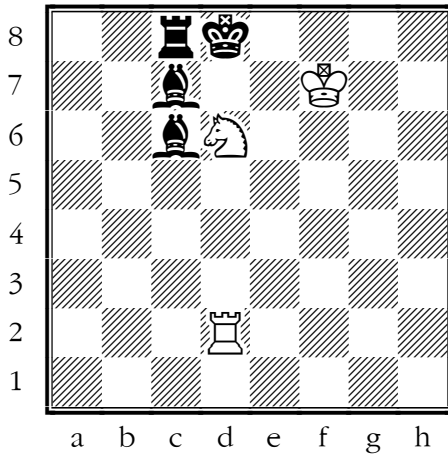
First Name:

Last Name:

Date:

Checkmate in 1 - Part 2

Draw an arrow to show how white can checkmate black in one move.



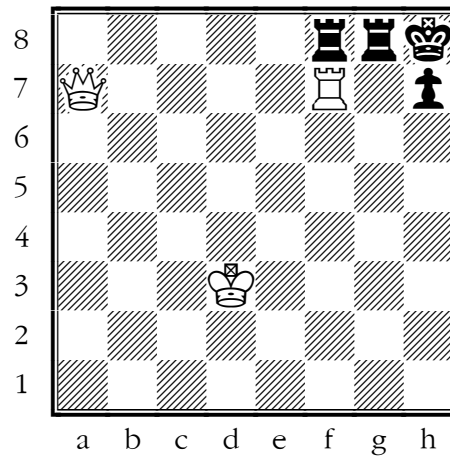
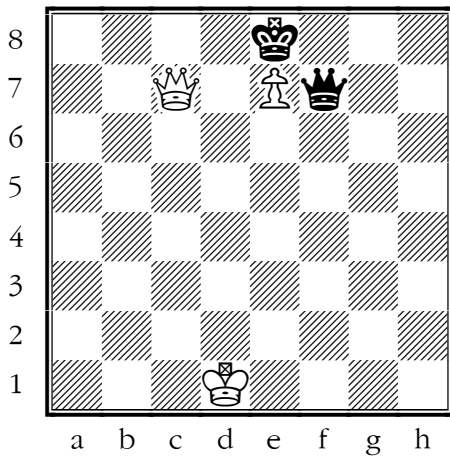
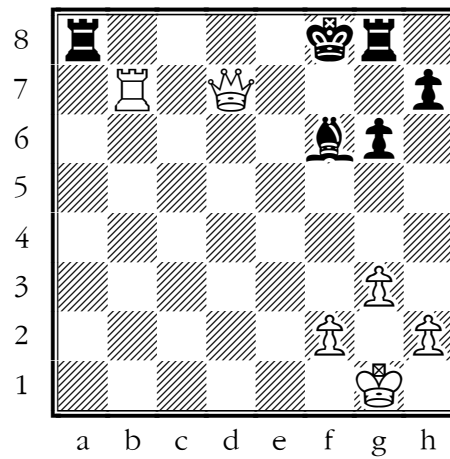
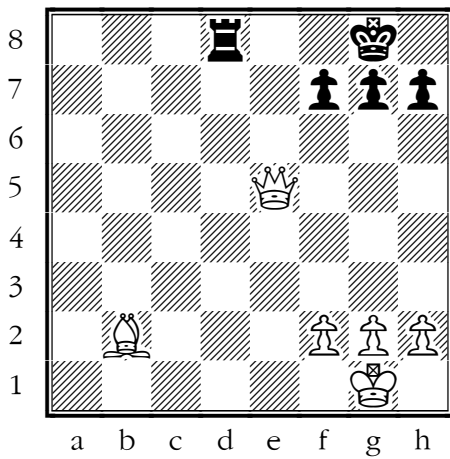
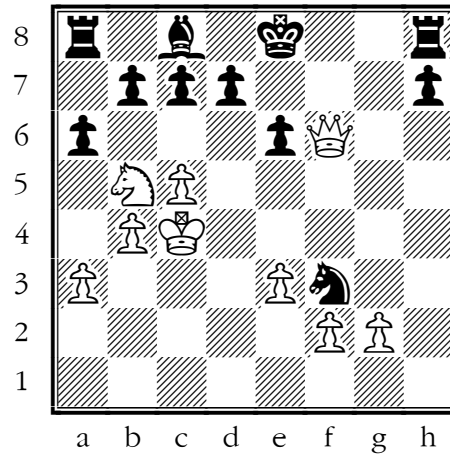
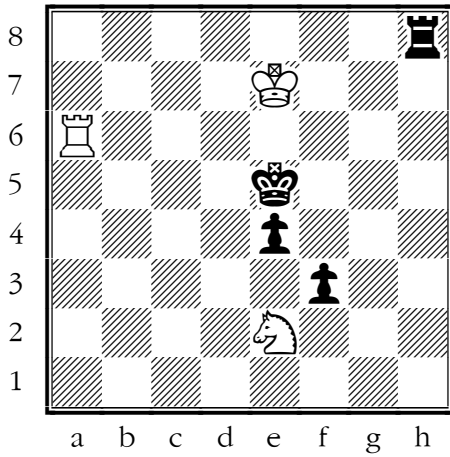
First Name:

Last Name:

Date:

Checkmate in 1 - Part 3

Draw an arrow to show how white can checkmate black in one move.



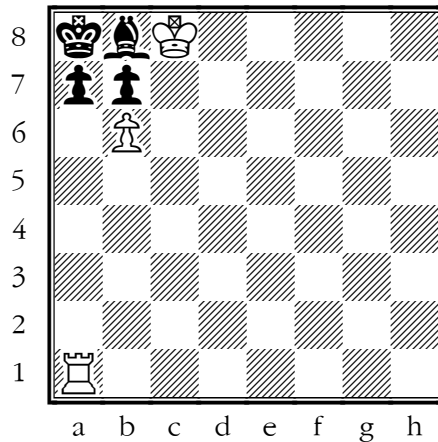
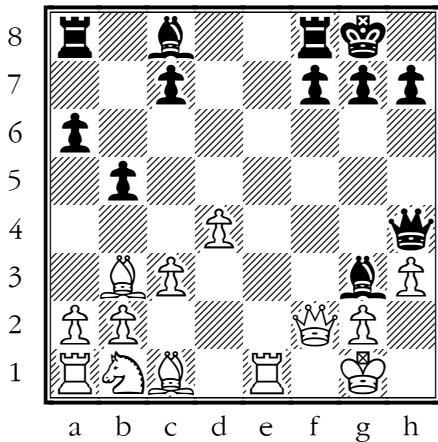
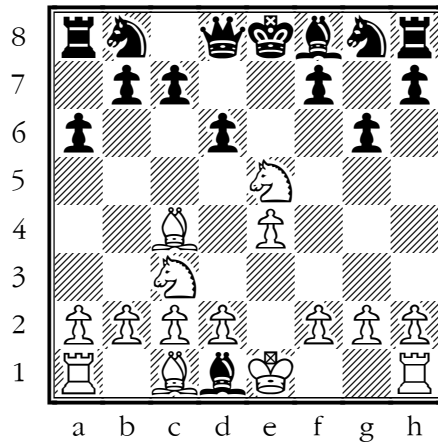
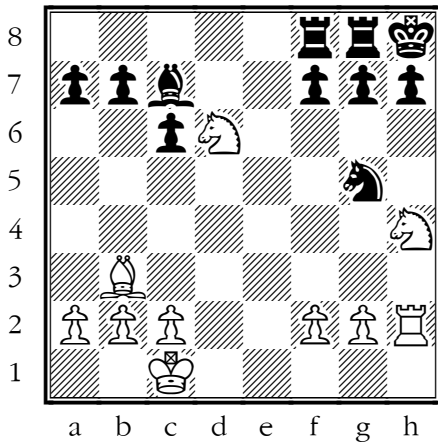
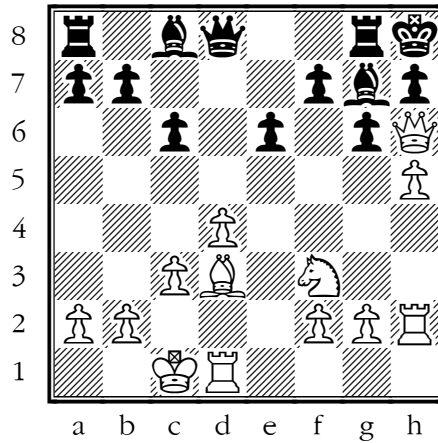
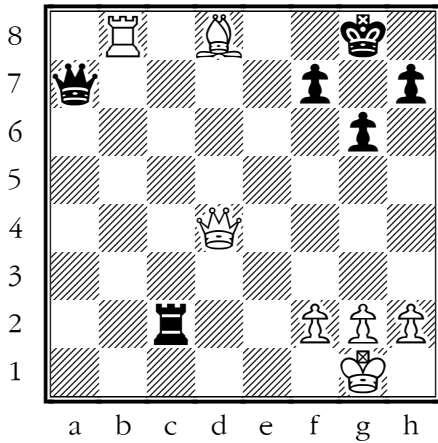
First Name:

Last Name:

Date:

Checkmate in 2 - Part 1

Draw arrows to show how white can checkmate black in two moves. Don't forget: you can't move twice in a row in chess. Black moves, too.



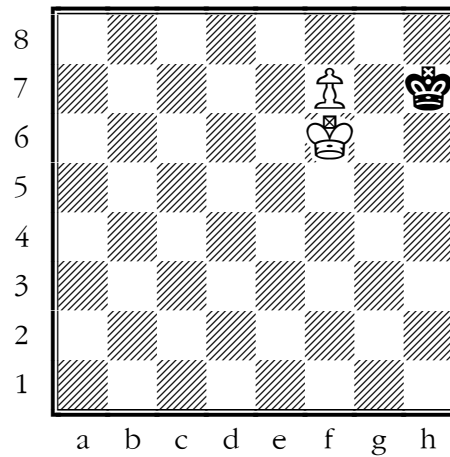
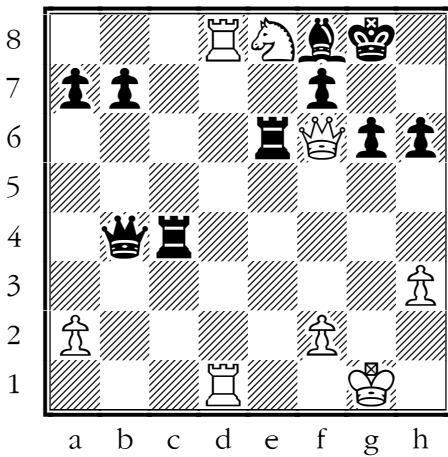
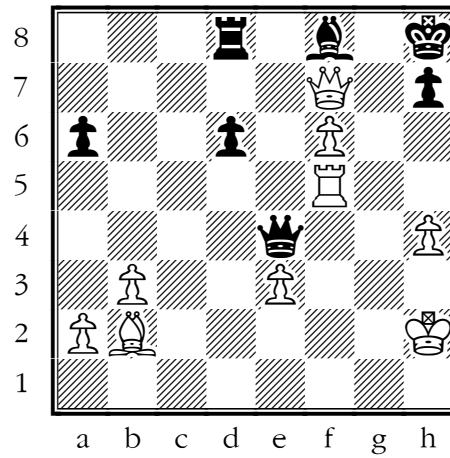
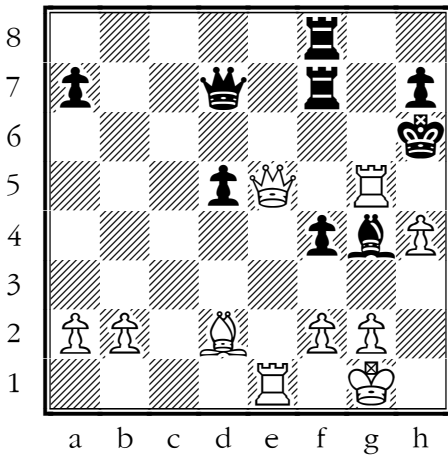
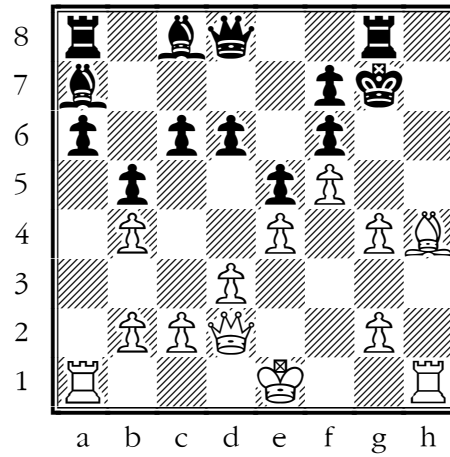
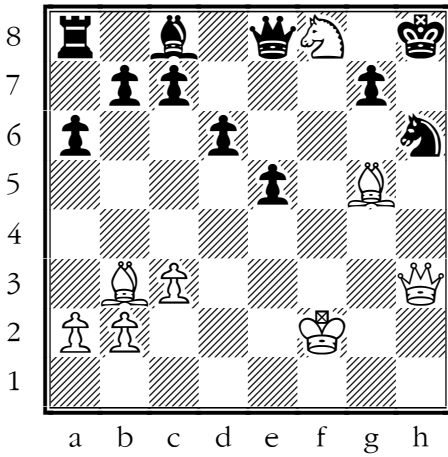
First Name:

Last Name:

Date:

Checkmate in 2 - Part 2

Draw arrows to show how white can checkmate black in two moves. Don't forget: you can't move twice in a row in chess. Black moves, too.



First Name:

Last Name:

Date:

Checkmate in 2 - Part 3

Draw arrows to show how white can checkmate black in two moves. Don't forget: you can't move twice in a row in chess. Black moves, too.

